

Type J Trap Door Order - Submittal Sheet

Job Name _____
 Orion Representative _____
 Quantity _____

Contractor Signature _____
 Approval Date _____
 Contractor's P.O. No. _____

Please e-mail your signed and completed submittal and purchase order to orientanks@wattswater.com.

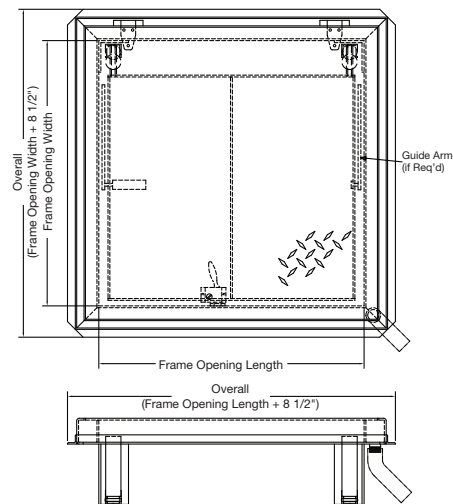
Type J Trap Door

Specification

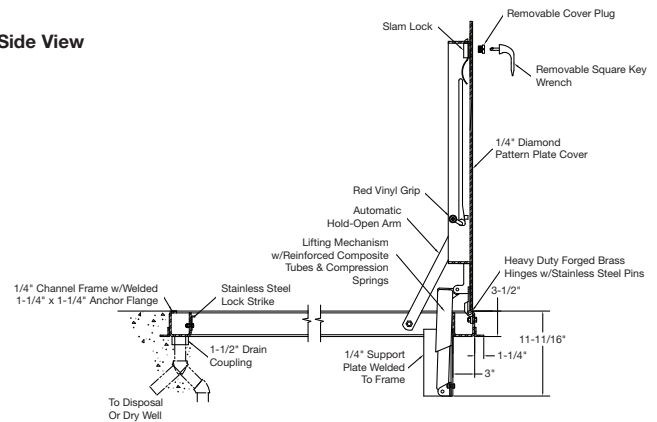
Orion Type J Trap Door shall be aluminum or steel construction, single or double leaf design, with 300 PSF reinforcing and engineered lift assistance for controlled cover operation unaffected by temperature. Cover shall be 1/4" aluminum or steel diamond pattern plate, channel frame shall be 1/4" aluminum or steel with full perimeter anchor flange, hinges shall be designed for horizontal installation and shall be through bolted to the cover with tamperproof Type 316 stainless steel lock bolts and to the frame with Type 316 stainless steel bolts and lock nuts. Channel frame shall come with 1 1/2" drain coupling. Lifting mechanism shall be compression spring operators enclosed in telescopic anti-corrosive composite tubes with upper tube being the outer tube, providing controlled cover operation through the entire arc of opening and checking downward motion of the cover when closing. The lower tube shall interlock with a flanged support shoe fastened to a formed 1/4" gusset support plate. Cover shall be equipped with a hold-open arm to automatically lock cover in open position. Trap door shall include one removable exterior turn/lift handle with spring-loaded ball detent to open the cover; latch release shall be protected by a flush, gasketed, removable screw plug. Hardware shall be heavy forged brass hinges with 3/8" diameter minimum Type 316 stainless steel pins, Type 316 stainless steel snap lock with fixed handle mounted on underside of cover, with all other hardware zinc-plated and chromate sealed. Finish shall be mill finish aluminum with bituminous coating applied to exterior of frame, or red oxide primed steel.



Top View



Side View



Check Box	Model No.	Frame Opening Dimensions	Material of Construction
<input type="checkbox"/>	J1	24" x 24"	Steel
<input type="checkbox"/>	J4	36" x 36"	Steel
<input type="checkbox"/>	JD2	48" x 48"	Steel
<input type="checkbox"/>	JD4	60" x 60"	Steel
<input type="checkbox"/>	J1AL	24" x 24"	Aluminum
<input type="checkbox"/>	J4AL	36" x 36"	Aluminum
<input type="checkbox"/>	JD2AL	48" x 48"	Aluminum
<input type="checkbox"/>	JD4AL	60" x 60"	Aluminum

Note: "D" represents a double door version

NOTICE

The information contained herein is not intended to replace the full product installation and safety information available or the experience of a trained product installer. You are required to thoroughly read all installation instructions and product safety information before beginning the installation of this product. Types J, JD, J-H20 and K trap doors are manufactured by The Bilco Company.

Orion Fittings product specifications in U.S. customary units and metric are approximate and are provided for reference only. For precise measurements, please contact Orion Fittings Technical Service. Orion Fittings reserves the right to change or modify product design, construction, specifications, or materials without prior notice and without incurring any obligation to make such changes and modifications on Orion Fittings products previously or subsequently sold.



A WATTS Brand

USA: T: (800) 334-6259 • OrionFittings.com
Canada: T: (905) 332-4090 • F: (905) 332-7068 • OrionFittings.ca
Latin America: T: (52) 81-1001-8600 • OrionFittings.com